



# OPERATING TABLE ACCESSORY



- 1. Head Board
- 2. Back Section
- 3. Seat Section
- 4. Leg Board
- 5. Kidney Bridge
- 6. Shoulder Support
- 7. Arm Support
- 8. Body Support
- 9. Anesthesia Frame
- 10. Leg Support
- 11. Side Rail Clamp
- 12. Hand Remote
- 13. Table Column
- 14. Table Base
- 15. Foot Pedal



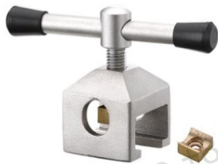
**HW-B05 Siderail Locks**

SS304 material, suit for 30x8mm / 25x10mm size side rail.  
14mm hole diameter.  
Fixing auxiliary bracket instruments of the operating table.



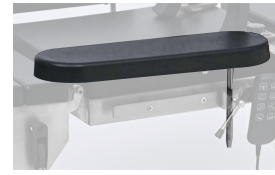
**HW-E07 Siderail Locks**

SS304 material, suit for 30x8mm / 25x10mm size side rail.  
Securing flat-bar stock accessories.



**HW-E04 Siderail Locks**

SS304 material, suit for 30x8mm / 25x10mm size side rail.  
14mm hole diameter.  
Securing pole accessories.



**HW-C04 Arm Support**

Armboard with Pad attaches to table siderail, provides upper arm support during lateral positioning, general arm support during supine, sitting.



**HW-A03 Leg Support**

Leg support with molded padding for patient comfort. Adjustable positioning including rotation and tilt.



**HW-D06 Shoulder Support**

Used for supporting, fixing, and protecting the shoulder during supine position head low & foot high surgery.



**HW-D05 Body Support**

Fixing the patient's body during surgery, pelvic fixation in a lateral position, and other body position requirements. The support pad can be adjusted and positioned 360° universal.



**HW-D03 Body Support**

Fixing the patient's body during surgery, pelvic fixation in a lateral position, and other body position requirements. The support pad can be adjusted and positioned 360° universal.



### HW-001-B1 Shoulder Support

Used for supporting, fixing, and protecting the shoulder during supine position head low & foot high surgery.



### HW-004 Lateral Support

The Lateral support stabilizes patients on OR tables for procedures in lateral position.



### HW-005-B Pelvis Support

Suitable for lateral lying position fixation of patients' waist and abdomen, pubic symphysis support, with lateral extension and universal fixation adjustment.



### HW-009-A1 Arm Support

Provides arm support for lateral, chair, prone and neuro positions.



### HW-007-A Arm Support

Supports arm at a comfortable angle. Locks by gravity to table siderail. Adjusts 180 degrees horizontally.



### HW-LF-01 Lithotomy Leg Support

Suitable for Department of Urology operation, lithotomy position, obstetrics and Gynecology, endoscopic surgery, direct anorectal surgery and so on.



### HW-014-C Four Point Spinal Surgery Support

Used for prone position, spine, and spinal surgery, meeting the requirements of C-arm penetration, facilitating the development of spinal surgery.



### HW-J-I Manual Wilson Frame

Suitable for prone position, cervical spine, spine and other surgical posture requirements.



### HW-J-II Electric Wilson Frame

Suitable for prone position, cervical spine, spine and other surgical posture requirements.



### HW-016-B Carbon Fiber Manual Wilson Frame

Suitable for prone position, cervical spine, spine and other surgical posture requirements. Meet the fully transparent C-arm.



HW-010-A1

### Lateral Position Pad

Suitable for surgical requirements in a lateral recumbent position. Memory sponge material.



HW-011

### Abdomen Pad

Suitable for prone position and spinal surgery posture requirements.



HW-014-A

### Four Piece Spinal Support Pad

Suitable for prone position, for spinal and spinal surgery



HW-014-B1

### Combined Spinal Pad

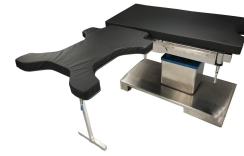
Suitable for prone position, spinal and spinal surgery, adjustable in size for both adults and children.



HW-007-A

### Carbon Fiber Prone Cushion

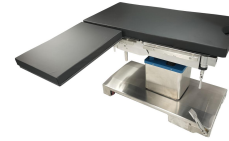
Suitable for prone position, spinal and spinal surgery, meeting the requirements of fully transparent C-arm, facilitating the development of spinal surgery



HW-017-A1

### Hand Microsurgical Stand (Floor)

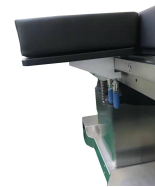
Suitable for microsurgery in hand surgery, providing support for patients' arms and other posture requirements.



HW-018-A1

### Hand Microsurgical Stand (Hanging)

Suitable for microsurgery in hand surgery, providing support for patients' arms and other posture requirements.



HW-018-D1

### Upper Arm Surgical Plate

Suitable for upper arm surgical support.



HW-019-A

### Head Doctor's Hand Support

Used in facial surgery, plastic surgery, ophthalmology, and other surgeries to provide elbow support for medical staff undergoing long-term surgeries



HW-019-B

### Head Support

Used for facial features, plastic surgery, ophthalmology, and other surgeries to support patients' heads



HW-020

### Multi Joint Doctor's Hand Rest

Used in facial surgery, plastic surgery, ophthalmology and other surgeries to provide support for medical staff's wrist and elbow joints.



HW-021-A1

### Knee Support

Used for knee replacement, knee support, knee surgery, and other surgeries.



HW-021-B1

### Knee Support

Used for knee replacement, knee support, knee surgery, and other surgeries.



HW-021-C1

### Knee Joint Knife Holder

Used for knee replacement, knee support, knee surgery, and other surgeries.



HW-021-D1

### Carbon Fiber Knee Support

Used for knee replacement, knee support, knee surgery, and other surgeries.



HW-023

### Abdominal Support Frame

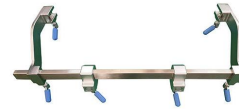
Used for kneeling position surgeries such as anorectal surgery



HW-025-A1

### Skull Clamp Adaptor

Used for attaching prone position head rest, U-shaped head rest, neurosurgery three needle head rest, etc.



HW-025-C2

### Skull Clamp Adaptor

Used for attaching prone position head rest, U-shaped head rest, neurosurgery three needle head rest, etc.



HW-026-A

### Surgical Head Rest

Used for neurosurgery, prone position, cervical posterior approach and other surgical requirements.



HW-026-A-01

### Surgical Head Rest with Gel Pad

Used for neurosurgery, prone position, cervical posterior approach and other surgical requirements.



**HW-026-A-02 Surgical Head Rest**

Used for neurosurgery, prone position, cervical posterior approach and other surgical requirements.



**HW-A005 Skull Clamp / Three Pin**

Used for neurosurgical craniotomy surgery, fixed head, three-point design.



**HW-A006 Skull Clamp / Three Pin**

Used for neurosurgical craniotomy surgery, fixed head, three-point design.



**HW-026-C Carbon fiber Skull Clamp**

Used for neurosurgical craniotomy surgery, fixed head, three-point design. Fully transparent X-ray carbon fiber material.



**HW-026-C-02 Carbon Fiber U Shape Head Rest**

Used for prone position, cervical spine, posterior cervical surgery, etc.



**HW-026-C-03 Carbon Fiber Cervical Traction Frame**

Suitable for posterior cervical traction in craniocerebral surgery, carbon fiber material can be used for fluoroscopy.



**HW-027-A1 Cervical Traction Guide Wheel Group**

Used for posterior cervical traction surgery.



**HW-028-B Shoulder Operation Frame**

Used for shoulder surgery to expose the shoulder for better surgical progress.



**HW-028-C Shoulder Traction Frame**

Used for shoulder arthroscopic traction surgery. SS304 Material



**HW-028-F Shoulder Traction Frame**

Used for shoulder arthroscopic traction surgery. Aluminum Alloy Material



### HW-028-D1 Upper Traction Frame

Used for traction surgery of elbow joint, upper arm, and palm.



### HW-030-A1 Single Knee Board

Used as a foot guard for kneeling position surgeries such as anorectal surgery, or for head and foot position surgeries.



### HW-031-A1 Double Knee Board

Used as a foot guard for kneeling position surgeries such as anorectal surgery, or for head and foot position surgeries.



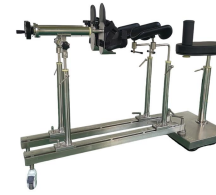
### HW-032-A1 Single Arm Instrument Tray

Used for storing surgical instruments and tools during surgery.  
SS304 Material.



### HW-034-A1 Double Arm Instrument Tray

Used for storing surgical instruments and tools during surgery.  
SS304 Material.



### HW-Q5 SS Traction Frame / Floor

Used for traction surgery in lower limb orthopedics.



### HW-Q6 SS Traction Frame / Hanging

Used for traction surgery in lower limb orthopedics.



### HW-Q7 Carbon Fiber Traction Frame / Hanging

Used for traction surgery in lower limb orthopedics.



### HW-051-A Accessory Trolley

Used to place and hang normal surgical table accessories for easy storage.



### HW-059-A1 Operating Table Widening Board

Used for lateral widening and extension of the operating table.



FP-060-A1 External Kidney Bridge

Used for posture requirements in liver and gallbladder surgery, kidney surgery, and other surgeries.



HW-063-T1 SS Dirt Basin

Used for gynecology surgeries.



HW-066-C1 Trimano Fortis

Used for surgical support of patients' arms, palms, foot joints, etc.



HW-067-A Spinal Surgery Position Stand (Carbon Fiber)

Used for spinal surgery, orthopedic trauma, cervical traction and other related surgeries, meeting the requirements of C-arm, G-arm, O-arm matching use, 360° no dead angle shooting.



HW-067-B Spinal Surgery Position Stand (Carbon Fiber)

Used for spinal surgery, orthopedic trauma, cervical traction and other related surgeries, meeting the requirements of C-arm, G-arm, O-arm matching use, 360° no dead angle shooting.



HW-040-A2 Fixing Clamp

SS304 material, suit for 30x8mm / 25x10mm size side rail. 19 mm hole diameter.



HW-040-B2 Fixing Clamp

SS304 material, suit for 30x8mm / 25x10mm size side rail. 25x25mm square hole.



HW-043-B Fixing Clamp

SS304 material, suit for 30x8mm / 25x10mm size side rail



HW-044-B Fixing Clamp

SS304 material, suit for 30x8mm / 25x10mm size side rail



HW-048-B1 Body Strap

Used to immobilize the patient's body during surgery.





Supine Position

- The advanced **unique gel material** is formed at one time.
- The position is **comfortable**, the fixation is firm, no movement, the operation field of vision is exposed clearly, and the operation is convenient.
- **Suitable for all kinds of skin, weight evenly distributed on gel, fluidity gel effectively dispersing pressure, providing excellent pressure release.**
- **No heat storage**, can prevent the generation of bedsore.
- **Long service life**, durable.
- No latex, no allergic reaction, non-conductive, non flammable, non adsorption odor, **X-ray transparent.**
- **Easy to disinfect, easy to clean**, with good flexibility and pressure resistance, it is very suitable for long-time, high-intensity surgical needs.



Prone Position



Lateral Position



Lithotomy Position



Donut Head Pad	
Item	Size (CM)
H015	12*5*2.5
H016	15*6*4
H020	20*7*5
H021	21*9*5
H030	25*11*7

Support and fixed protection for head and neck during supine surgery

Horseshoe Head Pad	
Item	Size (CM)
H113	12*5*2.5
H115	15*5*3
H120	20*7*7
H121	20*7*5



For the support of the head and face during lateral and prone position surgery, convenient for anesthesia cannula.



Ophthalmic Head Pad	
Item	Size (CM)
H118	18*6*4
H119	23*22*4
H222	28*25*6

For the support and fixation of the head and neck during ophthalmic surgery



Prostrate Head Pad	
Item	Size (CM)
H273	26*22*12
H274	27*23*13
H275	28*24*14

Designed for support of the face during prone position surgery, convenient for anesthesia intubation, keeping breathing smooth.

Prostrate Head Pad	
Item	Size (CM)
H220	23*20*11
H221	23*20*5.5



Designed for support of the face during prone surgery, convenient for anesthesia intubation, keeping breathing smooth.



Prostrate head pad	
Item	Size (CM)
H237	25*22*14
H238	25*22*(15-18)
H214	31*27*17 Adjustable
H218	23*20* (14-11)
H213	23*20*13.5 /14.5
H212	24*21*15.5 / 16.5

Support and protection of the face during prone surgery, adjustable, convenient for anesthesia intubation, and a mirror on the bottom to observe the patient during the operation.



Arm/Leg Fixed Pad	
Item	Size (CM)
L040	40*15*4
L050	50*15*4
L060	60*15*4
L052	52*16*5.5

For the fixation and protection of limbs

Head Fixation Pad	
Item	Size (CM)
H224	24*22*7
H223	29*25*8.5
H233	20*20φ13*7-6
H232	25*20*3/8



For the support and fixation of the head and neck during ophthalmic surgery



Thyroid Pad	
Item	Size (CM)
H260	48*39*9
H261	60*45*10-14
H262	45*36*4

For thyroid and neck surgery, strengthen the support and protection of the back of the neck.



Contoured Supine Head Pad	
Item	Size (CM)
H215	16*10*5.5
H225	20*15*5
H226	20*15*10
H231	18*18*8/4

Support and fixed protection for head and neck during supine surgery.

Semicircular Pad	
Item	Size (CM)
C130	30*10*4
C140	30*15*7
C145	42*12*10
C150	50*15*7
C151	50*10*7
C152	50*10*4
C160	50*15*10
C161	50*15*11



Used to protect the compression point during surgery, relieve pressure on the shoulders, chest and abdomen, and protect the nerve tissue.



Column Shaped Pad	
Item	Size (CM)
C060	20*8*10
C070	20*12*10
C080	40*12*10
C090	50*12*10

It is used to protect the compression point during surgery, relieve pressure on the shoulders, chest and abdomen, and protect the nerve tissue.

Slanting shaped pad	
Item	Size (CM)
L225	25*15*6-2
L230	30*18*7-3



Suitable for supine position, lateral position and prone position operation.



Heel Pad	
Item	Size (CM)
L016	16*9*5
L017	19*11*7

Used to protect the heel and ankle.

Hip Pad	
Item	Size (CM)
L003	31*32.5*5
L005	50*40*1.5
L006	40*40*2
L007	40*40*3
L010	40*40*4
L014	50*40*4
L001	40*40*5
L002	50*40*5



Used to protect the buttocks and sacrum during supine surgery, which can reduce the pressure to the compression point and prevent the formation of the pressure ulcers.



Strap Pad	
Item	Size (CM)
L125	25*5*1
L132	32*5*1
L145	45*7*1
L160	60*7*1
L161	60*11*1
L162	60*14*1

Protect the fixed torso and joints for easy surgery and avoid injury.



Prone Position Pad	
Item	Size (CM)
C260	63*46*16
C261	62*50*13
C262	62*50*16/13

It is designed to relieve chest pressure during prone position and maintain a smooth breathing cycle.

Prone Position Pad	
Item	Size (CM)
C263	63*46*18



It is designed to relieve chest pressure during prone position and maintain a smooth breathing cycle.



Prone Position Pad	
Item	Size (CM)
C253	80*50*11
C254	60*40*11

It is designed to relieve chest pressure during prone position and maintain a smooth breathing cycle.



Prone Position Pad	
Item	Size (CM)
C266	75*50*25-33

The stent is made of carbon fiber and can pass X-rays. It is mostly used for prone surgery under perspective.

Prone Position Pad	
Item	Size (CM)
C264	66* ( 33-40 ) *22



It is designed to relieve chest pressure during prone position and maintain a smooth breathing cycle.



Prone Position Pad Set	
Item	Size (CM)
C257	30*12*10/4
C258	40*12*10/4
C259	50*12*10/4

A special protective pad for prone surgery, reduces the pressure on the chest and abdomen and provides protection for the compression points of the nerve tissue.



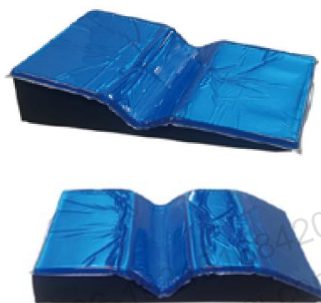
Prone Position pad	
Item	Size (CM)
C281	56*20*15
C283	65*20*12
C284	54*20*12
C282	67*20*15

A special protective pad for prone surgery, reduces the pressure on the chest and abdomen and provides protection for the compression points of the nerve tissue.

Tunnel Pad	
Item	Size (CM)
C273	64*46*20
C275	64*46*25
C276	63*40*20



It is used for the protection of lower limbs and the prevention and treatment of pressure sore during the operation of lateral position. Suitable for people with large weight.



Lateral Position Pad	
Item	Size (CM)
C270	70*50*17
C271	70*50*15
C272	72*50*10

It is designed for use in lateral position surgery to relieve pressure on the shoulders and arms and protect nerve tissue.



It has strong versatility and is widely used. It can reduce the pressure of the pressure points and prevent the formation of the pressure ulcers.

Universal square pad	
Item	Size (CM)
L301	10.5*62*1
L302	16*15*2.5
L303	16*60*1
L304	27*20*1.5
L305	40*24*1.5
L306	50*23*1.5
L307	50*30*1.5
L308	50*40*1.5
L309	50*50*1.5
L310	53*45*1
L311	57*35*1
L312	63*45*1.5
L313	30*20*2.5
L314	18*18*1.5
L315	59*12*1.5
L316	40*40*1.5
L317	75*50*2
L318	45*7*1.2
L319	25*5*1.2
L320	32*5*1.2

Universal square pad	
Item	Size (CM)
L321	15*5*1
L322	60*7*1.2
L323	35*35*1.5
L357	15*12*1.8
L324	15*12*1.5
L325	30*20*1.5
L326	40*30*1.5
L327	63*40*1.3
L328	40*20*4
L329	40*40*2.5
L346	40*40*2
L347	40*40*3
L330	40*40*4
L331	50*20*2
L332	50*20*3
L333	50*20*4
L348	50*30*2
L334	50*30*3
L335	50*30*4
L336	50*40*2